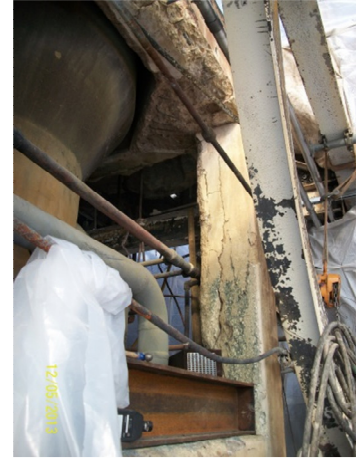




PROJECT PROFILE

Private Industrial Client – Column Grouting

TYPE of PROJECT: Pressure injection of grout
STRUCTURE: Cast In Place Concrete
INDUSTRY SECTOR: Industrial
LOCATION: East Dubuque, IA
Owner: Private Party
CONSULTANT: WHKS



PROJECT DESCRIPTION

CLIENT PROBLEM: a fire had severely damaged the C.I.P. concrete columns and beams supporting industrial equipment vital to the operation of the facility. Do to the damage the facility had to be shut down, until repairs could be made

VECTOR SOLUTION: Vector Construction was hired to pressure inject a structural grout between a new steel encasement and the original C.I.P. columns and beams to completely fill the annular space between the concrete and steel.

BENEFIT TO THE CLIENT:

- Fast turnaround
- Structural repairs to the concrete columns prior to grouting
- Design build effort between Vector and the design team to specify a product and procedure
- A void free encasement

Structural Repairs Prior to Grouting



View of the Steel Encasement

